

# CATALOGUE OF THE CANBERRA BICYCLE MUSEUM COLLECTION

Expressions of interest are called  
for to acquire the entire collection  
or significant parts of it.



The Big BMX bike was specially commissioned for the Canberra Bicycle Museum in Dickson, ACT, Australia. It is a feature of the front yard, especially attracting young children.

First time offered  
Closing date: 31 October 2008

[www.canberrabicyclmuseum.com.au](http://www.canberrabicyclmuseum.com.au)

## **Foreword**

**The Directors of the Canberra Tradesmen's Union Club are reluctantly calling for expressions of interest in the Acquisition of the Canberra Bicycle Museum collection of bicycles as a complete collection.**

This excellent and world renowned collection was painstakingly put together, over several decades, by the dedicated curator and staff of the museum at the express wish of the Club's Directors as a service to the Community and their concern that these items are not lost to the future. The specimens have been collected from many parts of the world with the view to store and display these historical items for research, education and enjoyment of present and future generations.

The collection is the largest of its type in Australia, and one of the largest in the world. It consists of over 500 bicycles, including many fine specimens in original condition. Some have been restored to as new, while others are in as found condition, but all representing the euphoria and magic of the bicycle through the various eras of its development.

It is envisaged that the collection would be acquired as a complete offering, by a Government or semi-government body or trust, with adequate resources to allow for a significant part of the collection be available for display to the public, for historical, research, education, tourism and other appropriate purpose.

It is expected that the "Expressions of Interest" would be in writing and contain the name, address and purpose of the organisation, the reasons for the interest in this collection, the intended use and where it would be adequately housed, together with contact details and name of Public Officer, the amount offered for the collection, and would it be likely to be available for public display or research, education or tourism purposes.

### **"Expressions of Interest" in the collection close at 4pm on 31<sup>st</sup> October 2008**

and must be received in writing to:

The Chief Executive Officer,  
Canberra Tradesmen's Union Club  
Post Office Box 498  
DICKSON ACT 2602  
CANBERRA  
AUSTRALIA.

## **Catalogue of the Canberra Bicycle Museum Collection**

This catalogue with coloured photos of the collection can be purchased for \$25 including postage, and will be posted on receipt of cash, cheque or money order in Australian Dollars, (no foreign cheques will be accepted). Please state number of catalogues required and include a full postal address, and can be ordered from the above address.

The whole catalogue is also available on our website: [www.canberrabicyclemuseum.com.au](http://www.canberrabicyclemuseum.com.au)

*The numbers in the catalogue refer to the Canberra Bicycle Museum accession numbers.*

*It should be noted that the photographs within the catalogue were mostly taken at the time of accession of the bicycle, and may differ to the article with age and in some cases use. The photos, and details including age etc are as accurate as possible, and every care has been taken with the preparation of the catalogue, but no responsibility will be accepted for any errors or omissions etc.*

*The notes in the catalogue are the vendors interpretation, and those with the interest of acquiring the collection should satisfy themselves as to the condition and accuracy of the collection as a whole and the individual items within it.*



#720  
Boneshaker, 35" & 29" wheels, English 1869. Excellent condition



#189  
Boneshaker Tricycle English 1869. Excellent condition.



#379  
Rudge sociable, 16" & 36" wheels, 1878. Restored in Australia by Lionel Walters, Gunnedah.



#147  
Butler Omnicycle Tricycle, 52" rear wheels, 1880.



#154  
Boneshaker, 33" & 29" wheels, 1869. Excellent condition.





#400  
Star 1880, from the USA. Great condition.



#482  
Pennyfarthing. Unknown. Rusty, no tyre, poor condition.



#150  
Matchless 57" Pennyfarthing, England, 1880's.



#296  
Kangaroo, English, 1880. Restored by Paul Farren, Melbourne. Beautiful piece.



#137  
Rudge-Whitworth 52" Pennyfarthing, England, 1880's.





#297  
Child's treadle tricycle, 1880's



#215  
Child's. Maker unknown, c1888.



#236  
Child's tricycle, 1900



#171  
Child's treadle tricycle, 1888.  
Unknown maker, 26" rear  
wheels, fair condition.



#152  
Child's treadle tricycle, England,  
1880's.



#353 Child's pennyfarthing,  
maybe 1886, English



#721  
Dursley Pedersen, Frame size No.7,  
England, 1903



#403  
Crypto, 36" & 24" wheels, England, 1890



#895  
Union safety, solid rubber tyres, USA,  
1878. Restored by David Fewster of  
Adelaide



#120  
Massey Harris, Canada, 1890. Wooden rims



#536  
Draisine Replica.  
Made by Simek  
Zbynek in Czech  
Republic.



#562  
Columbia Replica 42", by Bob  
Hunt, Taree



#14  
Pennyfarthing 48" Replica by  
Rideable Bicycle Replicas, USA.  
Was used in the Museum by  
many happy people to have their  
photo taken on..



#299  
Pennyfarthing 52" Replica by  
Brendan Dillon, Victoria.



#431  
Pennyfarthing 48", Replica by  
Brendan Dillon, Victoria



#321  
Pennyfarthing 50" Replica by  
Norm Lemin, Victoria



#16  
Pennyfarthing 38" Replica by  
Rideable Bicycle Replicas, USA,  
1983.



#323  
Pennyfarthing 40" Replica by  
Norm Lemin, Victoria





#13

Courting Cycle, Replica. Very poor condition, broken cranks, no chain, no pedals, 48" wheels.



#894

Eagle Replica, 53" rear wheel. Made by David Fewster, South Australia.



#20

Eagle Replica 40" rear wheel. Made by Rideable Bicycle Replicas in USA.



#124

Facile tricycle, Replica by Inner City Cycles, Sydney



#382

Double steerer Tandem Replica of 1900 version. Built by Wayne Kotzur, Gundaroo.

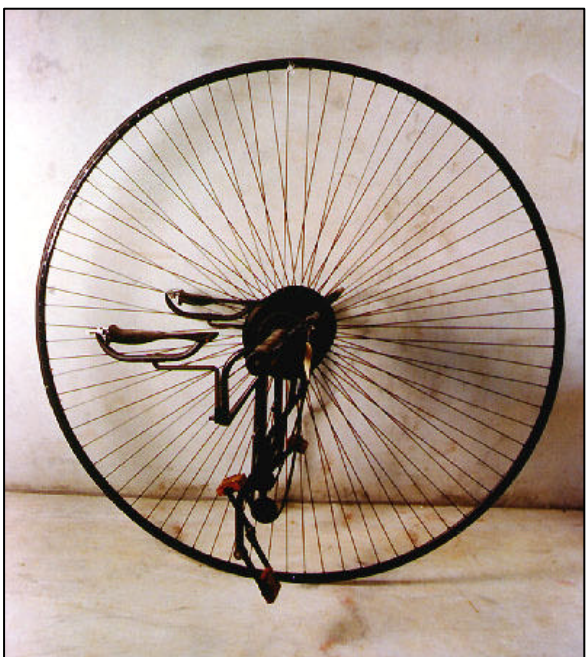




#328  
Rucker tandem, 52" wheels. From Bill Silvester, England



#329  
Pentacycle."Hen and Chickens" From Bill Silvester, England.



#271  
Tandem Unicycle. Replica built by Wayne Kotzur. Has not been ridden yet., 66 1/2 " wheel., 2 seats.



#322  
Coventry Lever Tricycle Replica. Built by Wayne Kotzur, Australia.

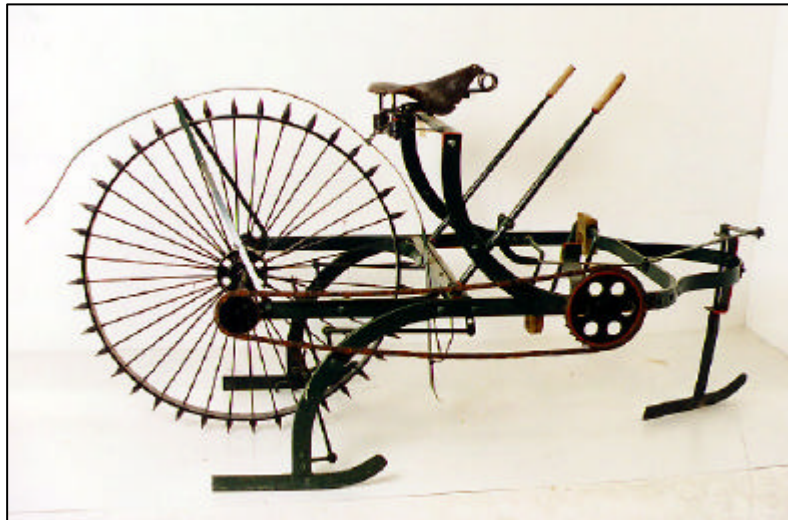


#553  
Tricycle Replica of 1890's version. Built by Brett Richardson, Queensland.



#480  
Rover Replica by Brett Richardson, Queensland





#390  
Ice bike. Replica of c1900's version. Built by Wayne Kotzur, Gundaroo.



#285  
Chillion, Stabbins, USA, 1895.  
Wooden frame



#1044  
Bullock, South Australia, 1910?



#206  
Safety, 1898. Unknown manufacturer.



#711  
BSA UK, 1900



#68  
Massey Harris, Canada, 1890



#722  
Star safety, England, 1895



#701  
Double steerer tandem, 1890, USA



#67  
Massey Harris, Canada, 1890



#342  
Humber, UK, 1897



#248  
Solid tyre safety, 1890, English



#64  
Elswick Sports, England, 1892.



#723  
Malvern safety, 1890. Manuf  
C.Santler & Co



#69  
Redbird, by Canada Cycle &  
Motor Co, 1890.



#95  
Humber, England, 1892



#170  
German Army WW1, Adam  
Opel, Germany, 1916



#455  
Centaur, England, 1920



#294  
Marriott & Cooper, UK, 1885.  
Solid tyre safety



#506  
Malvern Star 1 star, Australia,  
1920



#517  
Coburg, 1896, English



#221  
Singer safety, England, 1893.





#535  
Dursley Pedersen, England, 1902



#219  
Massey Harris, Canada, 1900



#70  
Speedwell, 1900. Australia



#58  
BSA, 1903



#288  
Napoleon, 1902 England



#55  
Massey Harris, Canada 1905



#96  
Centaur, 1900. Manufactured by  
Fleet, England



#66  
BSA, 1900



#139  
Policeman's Royal Sunbeam,  
UK, 28"



#37  
Dursley Pedersen Replica built  
by Inner City Cycles, Sydney.  
27" wheels



#226  
Goold, Canada, 1905



#993  
Royal Enfield, 28"



#111  
BSA, England, 1911



#969  
Michaux Blois, France, 1910?



#710  
Schwinn "The World", USA,  
1920's. Excellent condition.



#208  
Electra, Germany, 1910



#198  
PMG Speedwell, Australia,  
1920's



#106  
Raleigh, England, 1910



#108  
Premier, William Hillman, Eng-  
land, 1910. Fair condition



#1021  
'The Barb' frame and forks only,  
Finlay Bros, Australia, 1910



#118  
Giramondo, Italy, 1920's



#712  
BSA Policemans Bike, UK,  
1920's



#1021  
'The Barb' frame and forks only,  
Finlay Bros, Australia, 1910



#705  
Eagles, Preston Star, Australia,  
1920



#227  
BSA semi-racer, England, 1910



#545  
Speedwell, Australia, 1929

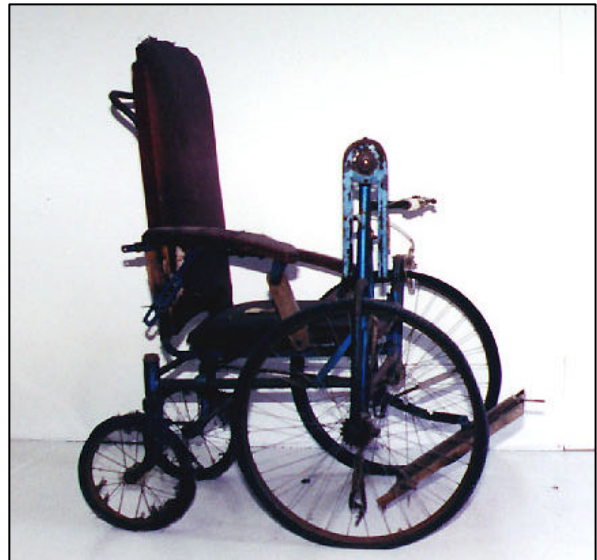


#1036  
Carbine, Australia, 1920's. Poor  
condition





#256  
Invalid's tricycle, England, 1936



#463  
Invalid's tricycle, Maker unknown, 1940's



#252  
Invalid Tricycle. Maker unknown. Approx 1910.



#318 Invalid's tricycle. Maybe 1920's. Maker Unknown



#97  
Velociman Replica. Built by Wayne Kotzur, Sydney.



#697 Invalid's tricycle, Globe Cycleworks, Australia





#330  
Child's cross frame safety, 1920.



#731 Child's bicycle, leaf spring.  
Maker unknown, c1938.



#254  
Flivver, 1930



#82  
Child's Viking, 1910



#181  
Flivver, 1940, Australia



#984  
Child's. Unknown maker and date.



#231  
Child's, Triang type, 1940's.



#320  
Child's, made by Triang,  
Australia, 1940



#281  
Cyclot, 1940



#971  
Child's pennyfarthing. Unknown maker.



#603  
Child's from Ampatoys,  
Australia, 1950



#229  
Sobel Industries, England, 1950



#942  
Child's, 1940's. Unknown maker.



#224  
Child's. Maker unknown, c1946



#629  
Malvern Star, Australia, 1940



#404  
Carbine, Australia, 1930



#309  
Healing, Australia, 1930



#576  
Rambler, Australia, 1931



#138  
Halford, England, 1927



#745  
Austral, Australia, 1935



#502  
Speedwell, Australia, 1936



#636  
Malvern Star, Australia, 1940



#56  
Hartley, Australia, 1939



#602  
Hillson, Australia, 1932



#714  
PMG, 1940



#1020  
Hartley, Australia, 1937



#703  
Malvern Star 5 star, Australia,  
1940. Restored by Warren  
Meade.



#1033  
Speedwell Ranger, Australia,  
1940's



#1030  
Repco, Australia, 1940





#116  
Golden Sunbeam, England, 1933



#477  
Mobylette, Australia, 1935



#117  
Curry Superb, England, 1933



#244  
Primarius, Holland, 1930's



#898  
Malvern Star, 2 star, Australia, 1930's



#445  
BSA, England, 1930's



#217  
Wearwell Delivery, UK, 1938, 20" & 26" wheels.



#514  
Safety. Maker Unknown, 1930's



#1037  
Electra, made by Adler, Australia, 1930's. Good cond.



#291  
German Army Officer's bike.  
Manuf: Mars, Germany



#241  
Hercules, England, 1930's



#143  
Executive from India, 1920, 28"



#717  
BSA, with motor, UK, 1930's



#483  
Rudge-Whitworth, England, 1935



#1039  
Healing, Australia, 1940's





#188.  
Side by side sociable, 28" wheels. Replica built by  
Rex Irvine, S.A., using 1940's bikes.



#43  
Side by side sociable Replica, 27" wheels. Built by  
Inner City Cycles, Sydney,



#713  
Tandem, English, 1940's, 28" x 1 3/8". \$3000



#999  
Arrow tandem, 1935



#105  
James tandem, 26" wheels, England, 1930's.



#540  
Tandem 28", by Renown, Australia, 1938



#313  
Delivery tricycle. Maker Unknown, 1940's



#163  
Butcher's delivery, Speedwell, Australia, 1940's,  
26" x 1 5/8 x 1 1/2



#487  
Malvern Star delivery, Australia, 1940's



#214  
Super Star delivery, Australia, 1940's



#319. Delivery tricycle, Cleveland, USA, 1930's



#312  
Speedwell delivery, Australia, 1930's

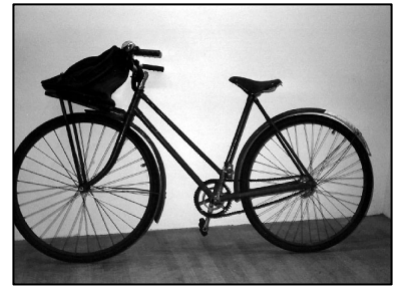




#955  
Rene Herse, France, 1940



#467  
Torpedo, Germany, 1943



#197  
Speedwell, Australia, used as a  
PMG bike c 1945.



#756  
Raleigh, England, 28" x 1 3/8"



#601  
Austral, Australia, 1940



#1047  
PMG bike, 1940, 28" wheels.  
\$300



#456  
Paratroopers BSA, folding,  
England, 1940.



#944  
Frame only. Hexagong tubing.



#507  
Malvern Star, 2 star, Australia,  
1940's



#190  
Speedwell Delivery, Australia,  
1940's



#1041  
Malvern Star, Australia, 1953



#1042  
Hillson, South Australia, 1940's



#459  
Overland, USA, 1940



#973  
Malvern Star Sports, Australia,  
1950



#975  
Speedwell, Australia, 1939



#343  
Paratroopers, BSA, folding, England, 1943



#913  
Hartley, Australia, 1944



#719  
Malvern Star with motor, Australia, 1947



#552  
Malvern Star 2 star, Australia, 1949



#976  
Malvern Star Dragstar, 1972



#953  
Speedwell, Australia, 1952



#715  
Delivery bike, BSA, UK, 1953



#293  
Malvern Star, Coronation Model, Australia, 1954



#543  
Malvern Star 2 star, Australia, 1956



#538  
Malvern Star, Australia, 1961



#325  
Moulton, England, 1965



#597  
Tollis, Australia, 1965



#432  
Malvern Star, Skidstar, Australia, 1971



#1032  
Speedwell Rover, Australia, 1950's





#107  
Pidgeon, China, 1950's.



#1050  
Rainbow, 1950.



#718  
Speedwell, Australia, with motor  
attached, 1950's



#531  
Raleigh, UK, 1953



#63  
Malvern Star, Coronation Model,  
Australia, 1953.



#692  
Kettler, 1950's



#277  
Speedwell Sports, Australia,  
1950's



#212  
Malvern Star, Australia, 1953



#1048  
Australia Post, 1960.



#450  
Schwinn Suburban, USA, 1960



#504  
Speedwell Sports, Australia,  
1975



#1049  
Australia Post, 1960, with leather  
bag.



#468  
Zundapp, with motor,  
Germany, 1960's



#344  
Pennyfarthing, Gitane, France,  
1972, 700c tyre



#905  
Raleigh 16", UK, 1960's.



#77  
City Hopper. Made by Kettler, UK, 1984. 12" front wheel, 16" rear wheel.



#523  
Moulton 16", England, 1960's.



#892  
Raleigh 20", SWB, UK, 1970's.



#279  
HON folding, Ace Stainless Steel, USA, 16"



#73  
Moulton 16", made under licence in Australia, 1965.



#638  
Jim Lemon U Tube, Australia, 1975.



#962  
Giant Halfway 20", folder, China, 2002. Single speed.



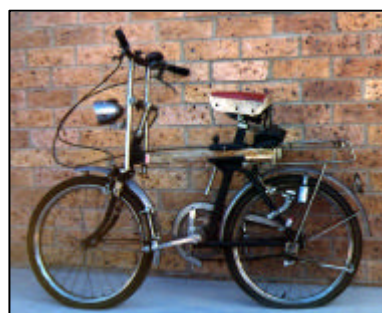
#274. Adjustable, 18" wheels from Five Rams, China.



#577  
Page, 12 1/2", France, 1947.



#394  
Strida, England, 1989, 16" folder, rubber belt drive.



#57  
Adjustable, 20" wheels, from Japan, 1952..





#446  
PWD tricycle by Toowoomba Bicycles, 24" & 26" wheels. Chair in front, one pedaller.



#8  
Silly cycle 20", two sets of pedals, 1979



#311  
One pedaller and two for the ride. Maker unknown, 1986, 20" wheels.



#22  
Surry Selene, Italy, 1983. 20" wheels



#53  
Delivery bike, Bates Cycles, Australia, 1970's



#91  
Two seater with canopy, 20", USA, 1978. Two sets of pedals.





#135  
Gefesco, Australia, 1980



#389  
Trimble, USA, 1989, 26"



#258  
Abeni with rear disc wheel, 1985



#448  
Itera, Sweden, 700c, plastic frame, 1980



#583  
Executive. Built by Ian Christie, Melbourne, especially for Ron Shepherd. Easy step through.



#361  
Montgomery Ward, Australia, 26", 1988



#501  
Cinelli racer, Italy, 700c, 1980's



#916  
Malvern Star skidstar, Australia, 1970.



#397  
Beveltech, Japan, 1989, 26"



#76  
Solex with motor, France, 1970's



#925  
Corso Sportivo, Italy, 24" & 26" wheels



#336  
Alenax, USA, 1988, 26" . Up and down pedal action



#948  
Beveltech, Japan, 1980



#908  
Monark Crescent AB, Sweden. Used by postal service in Melbourne.





#262  
Trishaw 28" wheels, Malaysia, 1970's



261  
Trishaw, Malaysia, 1975



#366  
Trishaw 28", Asia, 1950's



#129  
Trishaw



#201  
Trishaw, Phillipines, 1985



#38  
Railway Tricycle, NSW Railways, 1950's. Push/pull action.





#740  
Speedwell Mustang 20", Australia,  
1970



#707  
Malvern Star Dragstar, Australia,  
1960's.



#132  
BSA 18", England, 1976



#2  
Swing bike 16" & 20", USA,  
1981. The rear wheel can be  
moved from side to side. Just for  
fun!



#134  
Raleigh Chopper, 12" & 16",  
England, 1978



#490  
Cooper 16" & 20", 1970's



#1013  
Schwinn Apple Crate, USA,  
1980, 16" & 20" wheels



#584  
U-bike 20". Custom-built by Ian  
Sims 1992 for Ron Shepherd.  
Low frame for easy step through.



#525  
Robike 16" & 24" Built by Bill  
Fraser, Victoria, 1970



#453  
Raleigh, England, with motor,  
1970's



#1008  
Dragster, Repco, Australia



#90  
Fun cycle. From the USA, 1982.  
20" wheels, no gears.





#464  
Triple 24 x 1 3/8". Built by Peter Warren, Australia, 1981. 24" wheels



#415  
Triplet, 20" x 1.75", 1985



#12  
Tandem, can convert to a single bike. Made by Rideable Bicycle Replicas, USA, 1982. 20" wheels



#119  
Glen-Eira tandem, 20" wheels, 1980



#159  
Peugeot tandem, 700c tyres, France, 1960's



#511  
Malvern Star tandem, 26"x 1 3/8", Australia, 1977



#349  
Tandem 20"x 1.75". Built by Wayne Kotzur, Gundaroo





#199

Two way bike. It can be ridden, but which way?.  
Custom built by Canberra Bicycle Centre, Australia



#479

Tandem can convert to a single bike, Taiwan, 1980's



#618

Tandem, donkey back. Manuf: Liang Jui, China, 1990



#615

Tricycle. Made by Deki Bicycles, Japan, 1982. 20" wheels



#332

Semi-recumbent tandem, built by Wayne Kotzur, Gundaroo, 1987, 20" & 26" wheels.



#270

Four seater, drum brakes, Australia, 1984





#539  
Sociable Windsor. Made by R&R in Japan, 1977.  
Two sets of pedals.



#350  
Daisy Duo, from Daisy Bikes, Australia, 1988, 26" wheels.



#433  
Bedhead bike 20"x1.75". Built by Wayne Kotzur.  
Able to be ridden by two people, just for a laugh.



#447  
Sociable, by Aquabike International, in Australia, 1988. 20"



#26  
Sociable. Built in Bundanoon, Australia, 1982. 16" front wheel 24" rear wheels.



#305  
Sociable recumbent, 1970, 16" & 20" wheels



#257  
Sinclair, England, 1985. Battery missing



#438  
Recumbent tricycle by Greenspeed, Australia. 20" & 26" wheels



#422  
Seabike from Netherlands, 1990



#284  
The Grey Whale recumbent, built by Wayne Kotzur, 1986, 20" wheels. (cover not shown)



#9  
Sling shot. Manuf: Kuwahara. 20" & 24".



#442  
Recumbent, by Ian Sims, 1992



#310  
Hypercycle recumbent, 1987, 20" & 27" wheels.



#74  
Moulton recumbent. Desigend and made by Don Thomas, converting a moulton to a recumbent.



#465  
PWD recumbent by Toowoomba Cycles. Hand operated, no ped-



#346  
Recumbent by Bill Fraser, Melbourne, 1986 16" & 24" wheels



#544  
Threedom recumbent with fairing. Designed and built by Wayne Kotzur, 1994.. Was ridden Perth to Canberra in three weeks.







#44

Clown bike, made in Taiwan, 1983, very sturdy, 4 1/2 " wheels.



#292

Microhurry, by Araya, Japan, 12 1/2 " wheels.



#45

Tall unicycle, Taiwan, 1984. 20" wheel.



#128

Trick bike, USA, 1984, 24"x1.75. Rides like a unicycle from the rear.



#183

Double decker, 28" wheels, custom built.



#612

CHA Separable, by China Hard Alloy, Taiwan, 1985, 20" wheels. Trick bike.



#40

Aqua bike. Built by Aqua Bike International in Australia, 1982. 32" wheels



#729

Wheels, moving pedalled sculpture. Built by Jack Wardlaw, 1980



#94

Unicycle, 24" wheel



#204  
Half-bike, by Bronco, Italy,  
1985, 20" & 24" wheels.



#122  
Roadmaster, Australia, 1984, 20" wheels.



#606  
Speedwell 20", Australia, 1960.  
Can be converted to a girls bike.



#440  
Child's 16", Hero, UK, 1960.



#473  
Child's. 24", from Huffy Corp,  
USA, 1960



#902  
Scooter Hi-Speed, 1950's



#391  
Street racer 20" Manuf: Southern  
Cross, USA, 1989



#921  
Scooter, 1970, unusual



#634  
Child's racer, Master Sports,  
1960's



#308  
Trailer, 20" wheels.



#131  
Raleigh Gifter 20", England,  
1977



#61  
Child's 16" solid tyres, England,  
1960's.



#145  
Kuwahara E.T 20", Japan, 1983





#123  
Trailer, 1984, 20"x1.75.



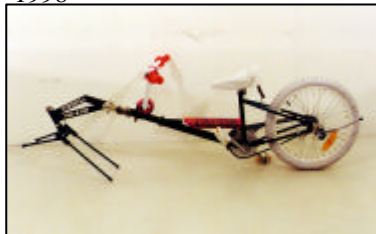
#744  
Rocket Cycles, Australia, 24",  
1998



#941  
Skate bike 12 1/2", by Lerun,  
2000



#93  
Huffy, USA, 16" for a child



#554  
Tug-a-tot, can be attached to an  
adult bike. Built by Greg  
Turnbull, Sydney, 1994



#443  
Power scooter, by Bony, 1991



#441  
Recumbent tricycle by  
Greenspeed, Australia, 16" & 20"  
wheels, 1991



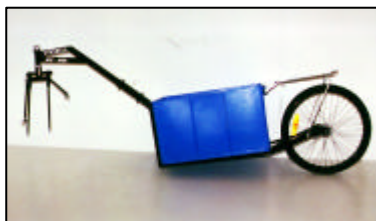
#360  
Condor BMX, built by  
Toowoomba Cycles, Australia,  
1988, 20"



#50  
BMX Sidehack 20"x1.75".  
Homemade, Canberra, 1984.



#52  
Twista. Made in Australia. Just  
for fun, it goes in any direction.



#556  
Wee-haul trailer, by Greg  
Turnbull, Sydney, 1994, single  
20" wheel.



#88  
Stand-up bike, 1984. A test of co-  
ordination



#376  
Street flyer, 16"&20", 1988



#560  
Raleigh 20 SWB, England, 1980



#485  
Allsop, Australia, 1993



#910  
Super Roo, from Melbourne Institute of Technology, Australia, 1996.



#103  
Lion, by Feng Huang, China, 1980



#997  
Trek 7000, USA, 1998



#742  
Schwinn. Made in Taiwan, 1998, 26"x2.125



#912  
Spokesman Cycles, Canberra, 1980



#997  
Trek 7000, USA, 1998



#537  
Solar Elektra Mobil. Repco, bike 26" Australia with added solar panels and batteries in rear panniers.



#914  
Pegasus, Canberra, 1980



#610  
Australia Post 24" & 26" wheels. Custom built by Southcott, Australia, 1990



#909  
Giant 26". Made in Taiwan, 1990



#1035  
Trek 3700, USA, 2000. very good condition.





#126

Mercedes Benz Replica car, with motor and two forward gears and a reverse gear . Shown here being driven by an 8 year old and pulling a custom-built caravan. Great as an advertising medium.



#338

Fibreglass Flyer. Built by Lennie Rogers, Australia for the Shell Mileage Marathon in 1988. This is not a pedal machine. The motor is missing.



#424

Sirio Sweep. Manufactured by Warwick, Australia, 1990. A practical machine for sweeping paths or factory floors.



#526

Phantom designed and built by Russell Rogers, Victoria, 1994. Not a pedal machine, it has a battery.





#155  
Child's tricycle, unknown maker,  
1900's.



#156  
Child's tricycle, unknown maker,  
1900's.



#99  
Pashley Pickle, UK, 16" wheels.



#85  
Child's flivver, Australian, 1940



#873  
Mobo Pony Express, with  
treadles, 1940.



#307  
Cyclops, made in Australia,  
1920's.



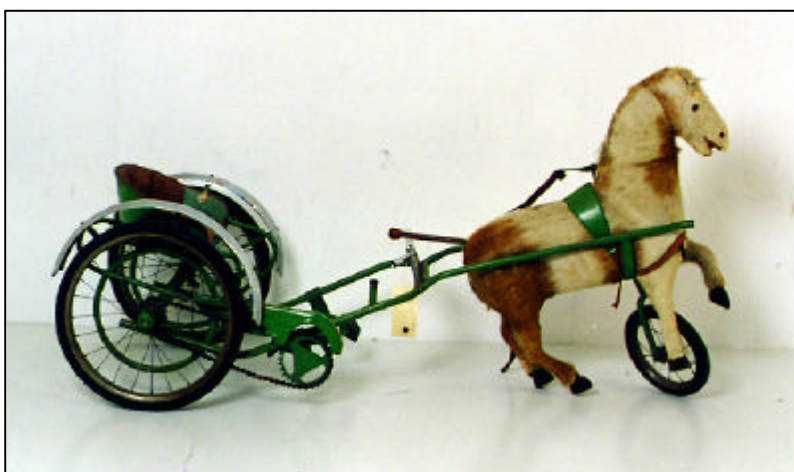
#83  
Cyclops tandem, Australia, 1935



#396  
Walking horse, with treadles not  
pedals



#59  
Pioneer tricycle, made by  
Gendron Wheel Co, USA



#735  
Horse and sulky, 1914, possibly made in Germany.





#733  
Squirrel, USA, 1950



#80  
Pedal car, resembles a 1928 Vauxhall. Unknown maker.



#963  
Pedal car VW. Unknown maker.



#278  
Pedal car, resembles 1950 Austin J40. Made in England.



#81  
Pedal car, resembles a 1928 Triang, has been restored and repainted



#741  
Childs' Vespa scooter, Italy, 1960.



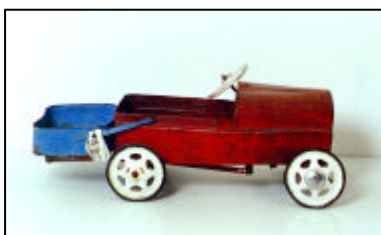
#980  
Childs's Vespa scooter, 1960



#893  
Pedal car. Unknown maker.



#410  
Tractor tricycle by Cyclops, Australia, 1940



#888  
Pedal car, by Cyclops, 1950's.



#367  
Cyclops tricycle with sidecar, Australia, 1950's



#385  
Ferbedo, USA



#177  
Jeep pedal car, 1950



#964  
Pedal car Formula 1., 2001.



#386  
Pedal car, resembles a 1920 T Model Ford. Built by Mark Phillis, South Australia. (no trailer)



#282  
Kettcar, 1986



#127  
Pedal car, resembles a 1984 Rolls Royce



#956  
Pedal car, resembles a Ford Estate Wagon. Made in Korea, 2001



#958  
Pedal car, resembles a Fire Engine. Made in Korea in 2001.



#957  
Pedal car, resembles 1937 US fighter plane. Made in Korea 2001



#961  
Pedal car, resembles 1936 Ford. Made in Korea 2001



#401  
Pedal car. Replica of 1921 T Model Ford Fire Engine. Built by Mark Phillis, South Australia.



#161  
Tandem pedal car. Replica of 1915. Built by Rex Irvine, South Australia.



#643  
Horse tricycle. Replica of 1930's toy. Made in Asia.



## Notes

